

The background is a stylized, low-poly illustration of a natural landscape. It features a dense forest of green trees in the upper half, a waterfall cascading down a rocky ledge in the center, and a stream flowing through the lower half. The colors are muted and earthy, with shades of green, brown, and grey. The overall style is modern and graphic.

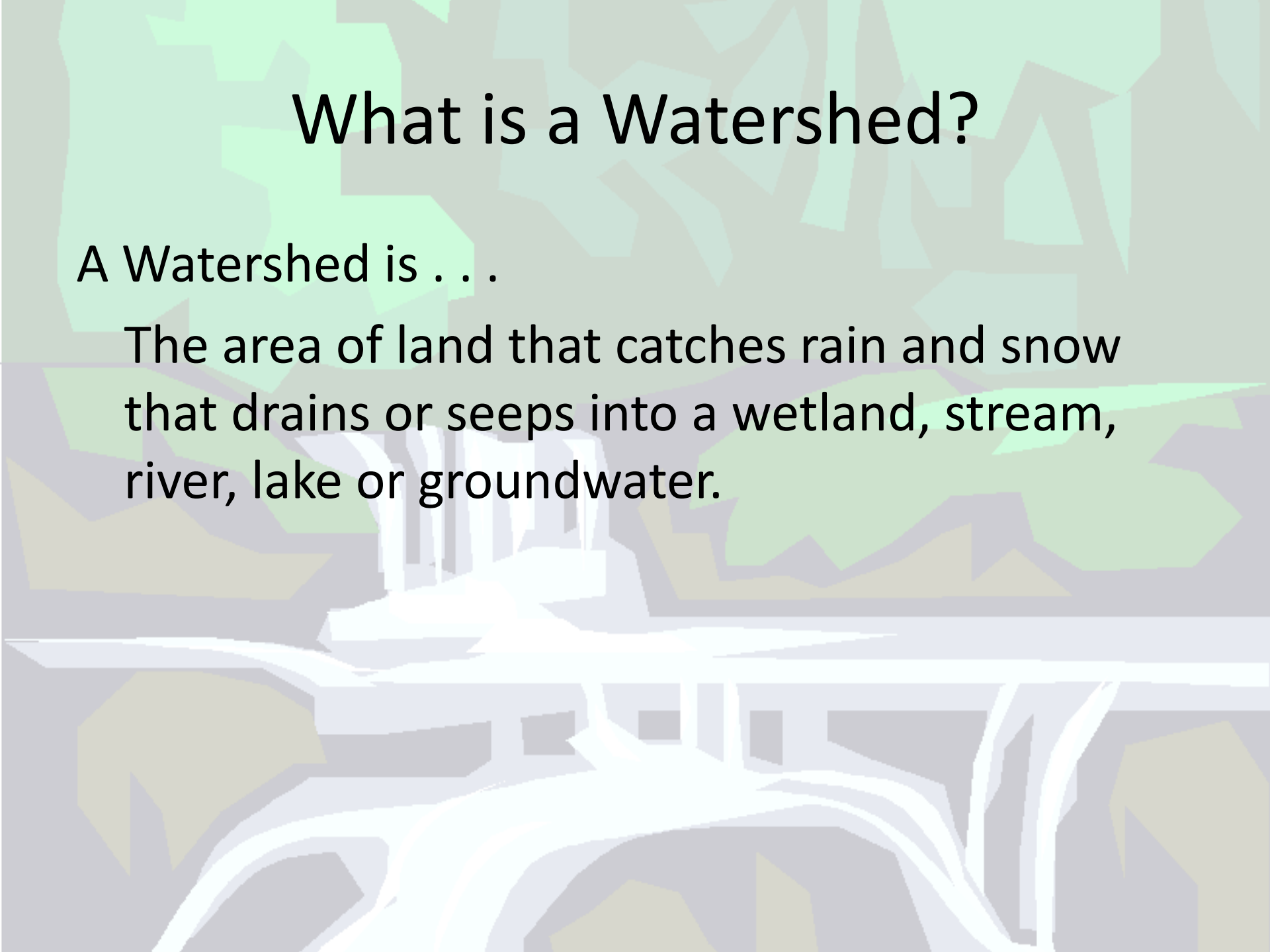
Dry Creek Watershed-based Planning Process

An Introduction

What is a Watershed?

A Watershed is . . .

The area of land that catches rain and snow that drains or seeps into a wetland, stream, river, lake or groundwater.



What is a Watershed-based Plan?

A watershed-based plan is a strategy that provides assessment and management information for a geographically defined watershed, including the analyses, actions, participants, and resources related to developing and implementing the plan.

What is a Watershed-based Plan?

A watershed-based plan is...

- is a flexible framework for managing *water quality and quantity* in the watershed;
- includes *strategies* to address the most important issues;
- provides a *framework for implementation*
 - *Responsible entities, partners, schedule, resources needed, funding options.*

What is a Watershed-based Plan?

It should address the following issues:

- What are the important uses of the watershed?
- What are the crucial water resource issues in the watershed?
- What are your goals for the watershed?
- How should protection and restoration of the watershed be achieved?

It should reflect the goals and interests of the community while protecting the environmental resources of the watershed.

What is a Watershed-based Plan?

- The watershed means something different to each member of the community, and all of these ideas are valid!
- The key to long term involvement in a watershed-based plan is to make the plan meaningful to each community member.
- To obtain greater community input, two Community Roundtables will be held for the watershed-based plan.

Main sections of a Plan

Watershed-based plans include:

- Water Resource Issues
 - Guided by local concerns and issues
 - Examines Water Quality, Water Quantity, Wildlife Resources, Land Use
 - Includes both point and non-point pollution
- Goals and Decisions
 - Developed with local input and an eye to the future
 - Identifies responsible parties, implementation plan, milestones, resources needed, funding options, etc.
 - Develops specific Best Management Practices such as increasing riparian zones or suggesting a new zoning ordinance.

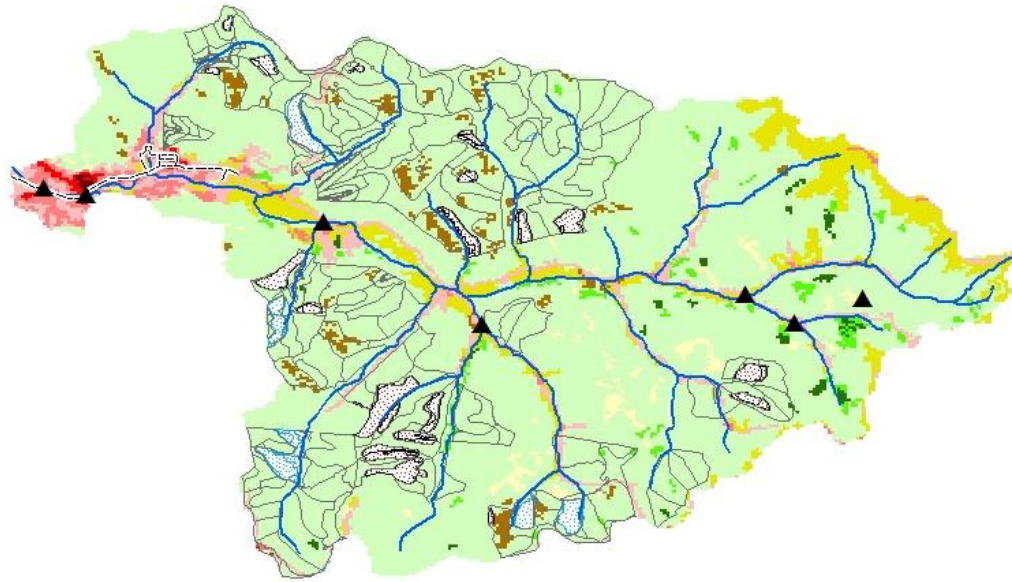
EPA Requirements for Watershed-based Plans

- a. Identify causes and sources of pollution
- b. Estimate load reductions expected
- c. Describe management measures and target critical areas
- d. Estimate technical and financial assistance needed
- e. Develop education component
- f. Develop project schedule
- g. Describe interim, measurable milestones
- h. Identify indicators to measure progress
- i. Develop a monitoring component

Why use a Watershed-based Plan?

- As a collaborative strategy to create a comprehensive plan that has community support, it should be a viable plan for the future.
- With a plan for the future, water quality can be protected/restored in the Dry Creek area as development continues.
- A watershed-based plan for Dry Creek can be used as a base for a larger plan for Triplett Creek.

Dry Creek Watershed



Legend

- ▲ Habitat Assessment Sites
- Sewerlines
- Streamlines
- DC_USFS_land
- DC_comm_logging
- DC_noncomm_logging
- Developed, open space
- Developed, low intensity
- Developed, moderate intensity
- Developed, high intensity
- Barren land
- Deciduous forest
- Evergreen forest
- Mixed forest
- Shrub/Scrub
- Grassland/Herbaceous
- Pasture/Hay

0 0.5 1 2 Kilometers



Who Should be Involved?

Everyone with a stake in the watershed...

- Local Government
- Concerned Citizens
- Environmental Groups
- Farmers/Local Land Owners
- Local Businesses
- Planning Agencies
- State and Federal Water and Natural Resource Agencies

Watershed Planning Team Members

- Facilitator: April Haight, Morehead State University
- Technical Advisor: Morehead State University
- Plan Manager: Katie Holmes, KWA
- Any other stakeholders who would like to join

The Team will meet once two months for the next one to two years. The team will review technical information, strategize, and review drafts of the plan.

Next Steps

- Plan Community Roundtable for early 2008
- Set regular meeting times
- Invite stakeholders to join planning team
- Begin to identify issues in and goals for watershed
- Gather data and assess data gaps

Questions?

Today's Agenda

- Planning for Watershed Roundtable
- Identify more stakeholders to be sure to invite to the Roundtable
- Review Findings from the Visual Assessment
- Issues in Watershed/Goal Setting for Project
- Review draft of Workplan
- Set regular meeting time
- Check on status of QAPP

This project is funded in part by a grant from the U.S. Environmental Protection Agency under § 319(h) of the Clean Water Act through the Kentucky Division of Water to the Kentucky Waterways Alliance (Grant # C9994861-04).