

Non-Profit
U.S. Postage
PAID
Munfordville, KY
Kentucky Waterways Alliance, Inc.
PERMIT #36

Newstreams

A publication of Kentucky Waterways Alliance: Working to protect and restore Kentucky's waterways.

We've Brought it Back!

Jennifer Milburn

Last February, KWA brought the Wild & Scenic Environmental Film Festival, the largest environmental film festival in North America, to Louisville.

With help from the watershed advocacy group, South Yuba River Citizens League, we're bringing it back to Louisville at the Clifton Center on February 27, 2010!

Last year's event was a lot of fun and a great success with over 220 people in attendance, 30 local sponsors, and nearly 100 new KWA members. This year, the theme for the film festival is "Water Connects us All." Our films and festivities will highlight how we can all

take action for clean water and the health of our environment!

This time around, we're proud to welcome Louisville's John Gage as our emcee. John is a veteran stage emcee at major festivals across Kentucky, and is host and emcee of *Kentucky Homefront*, a radio show airing Wednesday nights at 8 pm on Louisville's public radio station, WFPK.

Kentucky Homefront preserves Kentucky's cultural heritage through storytelling



ENVIRONMENTAL FILM FESTIVAL

and traditional music. The mission of the program is to preserve, promote, and celebrate live grassroots music and storytelling traditions of the rich and diverse cultures of Kentucky and its surrounding states.

Dave Shuffett will also be

(Continued on page 6)

Help Protect Kentucky's Rivers and Streams...Become a Member Today!

Name: _____

Address: _____

City / State / Zip: _____

Telephone: _____

E-mail: _____

Yes, I support the mission and goals of Kentucky Waterways Alliance.

INDIVIDUAL MEMBERSHIPS:

\$150 Watershed Angel

\$100 Watershed Guardian

\$ 50 Supporter

\$ 35 Family

\$ 25 Individual

\$ 12 Student/Low Income

GROUP MEMBERSHIPS:

\$1000 Business Benefactor

\$ 200 Business Supporter

\$ 35 Non-Profit Group

\$500 Business Sponsor

\$100 Business

Other _____

Enclosed is \$ _____

Thank you for your support!

Your donations are tax deductible! Mail to KWA, 107 E. Court St., Greensburg, KY 42743

Show Your Love for Beargrass Creek in 2010!

A huge "thank you" to all of you who came out and supported KWA at the Gallery Fundraiser in honor of Beargrass Creek at the Garner Furnish Art Studio in Louisville.

The event took place on a crisp autumn evening in October, and the beautiful paintings by Joyce Garner provided the perfect backdrop to mix and mingle and share our favorite Beargrass stories.

The crowd was excited to talk about our important work fighting for clean water across the state, and especially our



new effort to work right here in Louisville.

A string quartet from the Louisville Orchestra provided an excellent accompaniment to the delicious food prepared by none other than KWA vice president Gordon Garner himself! And what would a KWA

social event be without our celebrity bartender Tom Fitzgerald? Fitz made everyone feel right at home chatting about everything under sun from grape varietals to surface mining laws.

Kimberly Hillerich and Dennis Pidgeon from Skipping Fish Boat School in Louisville were in attendance with a gorgeous skin-on-frame kayak created in their shop. They graciously donated one set of free kayak building lessons for the raffle.

In a karmic-rich moment, Frank Elsen, long time KWA

(Continued on page 9)

Events

January 26 - Beargrass Creek Brainstorming Session hosted by KWA at Eyedia, 1631 Mellwood Avenue, Louisville from 6 - 8 pm. Contact:

Tessa@kwalliance.org or (502) 589-8008

February 20 - Upper Green River Watershed Watch Annual Conference in Bowling Green at Warren Co Extension Office, 5 - 8 pm. Dinner provided. Please RSVP. Contact: Elaine @ Elaine.diggis@gmail.com. Visit www.kwalliance.org to learn how to register under events.

February 27 - Wild & Scenic Environmental Film Festival hosted by KWA at the Clifton Center, 2117 Payne Street, Louisville from 7 - 11 pm. Tickets: \$15/ film festival & \$30/opening reception. KWA members get into reception free with film ticket.

(continued on Page 4)

Inside this Issue

From the Executive Director 2

Wild and Scenic Film Festival Feb 27 6

Red River Watershed Plan 8

Coal Ash Under Fire 9

Nationwide Permit 21 Hearing 11

KWA is hosting our 1st Beargrass Creek Meeting Jan. 26! Read more page 9.

From the Executive Director

Happy New Year From KWA!



As I write this we are having our first snow flurries. 'Tis the Season! Looking back on 2009, I'm reminded of the economic



meltdown of our nation. As a result, many non-profits are struggling to make ends meet. In this climate, we've been blessed with your generous support that has allowed us to claim some victories and expand our programs and reach for clean water in 2009.

In November, the state submitted a new regulatory package to US EPA that contains a number of improvements we've sought – and fought for – for years. In it are some provisions we are asking EPA to reject. Next year, we'll be working hard to win all the protections we believe are required under the Clean Water Act. Our actions are being watched by other states, particularly those we work with in the Mississippi River Collaborative. Many of those states are watching Kentucky closely – to see what is ultimately approved before finalizing similar regulations. Our work in this area is laying the groundwork for better water quality not only state-wide, but across the nation.

For the past decade we've been fighting to keep and enforce a stream buffer zone rule to protect water when mining companies are operating near streams. This includes fighting NWP-21, a fast-track, blanket permit that allows mining companies to destroy

streams by burying them under tons of mining waste and debris, with little environmental review and no public input. It finally appears the new administration is serious about examining the legalities and consequences of both of these practices with a public comment period open on both issues. Jason and I are working hard with our attorneys to submit the best possible legal and technical comments. (Read article on page 11.)

KWA was founded to help provide local groups with the resources and voice needed to clean-up and protect local waterways. Tessa leads this effort, working with several groups to complete watershed plans that will provide a blueprint for restoration and protection. When Watershed Watch groups indicated they needed help raising money, Tessa and I were able to provide training in October for developing a fundraising plan. Tessa is also leading our efforts to provide good, useable guidance to local groups and communities across the state in developing a Watershed Plan for their community.

We continue to reach out to new audiences on behalf of clean water in Kentucky. KWA recently participated in the Center for Interfaith Relations' Festival Of Faiths weeklong event with the theme Sacred Water, Sustaining Life. (Read more on page 4.) Our communications and outreach efforts, including our newsletter and publications, website, and special events, are

(Continued next page)

Newstreams

Published quarterly by
Kentucky Waterways Alliance

KWA Executive Committee

Beverly Juett, President

Gordon Garner, Vice President

Robert Johnson, Treasurer

Hugh Archer, Secretary

Bruce W. Scott, Immediate Past
President

KWA Staff

Judith Petersen, Executive Director

Jason Flickner, Water Resources

Program Director

Tessa Edelen, Watershed Program
Director

Jennifer Milburn, Outreach Director

Kelly Craig, Membership Assistant

Robert Wilson, Bookkeeper

Newstreams Editor

Jennifer Milburn

Kentucky Waterways Alliance, Inc.

120 Webster Street, Suite 217

Louisville, KY 40206

502-589-8008

107 East Court Street

Greensburg, KY 42743

270-932-2884

www.KWAlliance.org

KWA is a 501(c)3 corporation.

Articles express the opinions of their authors
and do not necessarily represent the views of
KWA or its officers.

Send your comments or letters to the editor to
Jennifer@KWAlliance.org.

(Continued previous page.)

and coal mines near and far. A small group of citizen advocates braved the "Friends of Coal" crowd to support the Corps' proposal to provide greater oversight and protection for Appalachian communities and the environment by altering or suspending NWP 21.

KWA has pursued litigation against the Corps since 2001 on NWP 21 due to the significant individual and cumulative degradation expedited approvals of coal mining operations utilizing valley fills have caused to Appalachia's streams, water quality, and aquatic diversity under the general permit. The proposal to abolish NWP 21 is mandated under a Memorandum of Agreement between the Corps and US EPA. Since taking office, the Obama administration has taken efforts to curtail the practice and devastating effects of burying thousands of miles

of Appalachian headwater streams under mining overburden. Recently, 49 coal mining permits in Kentucky alone have been withheld until EPA can verify their proposals and issuance will not violate the Clean Water Act.

The public hearing was kicked off with several politicians from the coal region including lieutenant governor Dan Mongiardo. They were there to give stump speeches in opposition to the Corps' proposal to abolish NWP 21. The frenzied crowd grew hostile as Kentuckians For The Commonwealth and Kentucky Waterways Alliance member, Doug Doerrfeld, rose to speak in favor of the Corps' proposal as a means to provide greater protection to Appalachian communities. Even the Corps District Commander's gavel and stern warning could not silence the drowning shouts of "Treehugger" and "Get a Job" coming from the crowd. A watershed moment occurred as Mary Love, another KFTC and KWA

supporter was attempting to speak, but again drowned out by the audience. A gentleman wearing a "Friends of Coal" hardhat took the microphone from Mary and instructed the crowd "to be quiet and let her speak, cause they were respectful when we spoke."

What began as a "Friends of Coal" rally turned tides as the evening progressed. As if the busses that had brought the multitudes of coal supports to the royal ball were going to turn back into pumpkins, the crowd almost in mass left at 9 pm. The last two hours were dominated by testimonies of the destruction mountain coal mining and valley fills have caused to the Appalachian people, communities, and environment.

The Corps is expected to release its final determination on the fate of NWP 21 later this year. Watch for our e-alerts for updates.

We're proud to announce the addition of five new bodies of water to receive Outstanding National Resource Water (ONRW) protections in Kentucky!

- Marsh Creek, McCreary County
- Reelfoot Lake, Fulton County
- Rock Creek, McCreary County
- Rockcastle River, Laurel and Pulaski Counties
- War Fork of Station Camp Creek, Jackson County

The Clean Water Act states "where high quality waters constitute an Outstanding National Resource, such as waters of National and State parks and wildlife refuges and waters of exceptional recreational or ecological significance, that water quality shall be maintained and protected." KWA collaborated with the US Forest Service and the Kentucky Division of Water to nominate four of the five new ONRW designated water bodies residing in the Daniel Boone National Forest. State law requires that water quality shall be maintained and protected in outstanding national resource water. A new discharger or expanded discharge which may result in permanent or long-term changes in water quality is prohibited. **The EPA's final approval will increase Kentucky's ONRW designated waters from 3 to 8 and will protect over 60 miles of streams and 2000 acres of wetlands.** We would like to thank the US Forest Service and the Kentucky Division of Water for their support and assistance in protecting these invaluable natural resources.



Photo credit: Brandon Jett

KWA Voices Concerns Over Coal Ash

Jason Flickner

In December 22, 2008 the largest coal fly ash release in U.S. history occurred when approximately 1.1 billion gallons of coal ash and water spilled from the Tennessee Valley Authority's Kingston Fossil Plant's impoundment on to land and homes adjacent to the plant and into the nearby Clinch and Emory Rivers, tributaries of the Tennessee River.

As we approach the one year anniversary of the Kingston spill, Louisville Gas and Electric and Kentucky Utilities are proposing for rate payers to fund the expansion of wet coal ash impoundment practices in Kentucky.

These proposals come on the verge of the Environmental Protection Agency's release of new rules controlling the handling and disposal of coal ash.

LG&E's Trimble facility, which sits in the flood plain of the Ohio River within 40 miles upstream of Louisville and the Louisville Water Company's drinking water intake, proposes to vertically expand the plants existing coal ash pond by 2.1 million cubic yards of capacity. The cost of this would be \$25.36 million. LG&E has petitioned the Kentucky Public Service Commission (PSC) to approve a Certificate of Public Convenience and Necessity ("CPCN") for Environmental Cost Recovery (ECR) of \$.71 per month for residential rate payers with the maximum monthly increase expected to be \$.84 per month during 2014.

Kentucky Utilities' Brown facility is proposing to add decades-worth of coal ash storage capacity to the main and auxiliary coal ash ponds by building new ponds atop the dried ash already in the existing ponds. The total capital costs for these projects are \$9.82 million for the main pond and \$13.4 million for the auxiliary pond. Kentucky Utilities is requesting an initial monthly increase of \$0.99 per month for residential rate payers during 2010, with the maximum monthly increase expected to be \$3.73 per month during 2013.

In November, KWA along with our allies submitted a detailed technical review of the KPDES permit for wastewater discharged from LG&E's Trimble Generating facility. Coal power plants that have installed air scrubbers in their smokestacks to meet Clean Air Act requirements are now requesting to wash off the contaminants collected by the scrubbers and discharge the wash water to surface waters. This scrubber wash water contains many toxins, heavy metals, and Bioaccumulative Chemicals of Concern (BCCs) including mercury, dioxins, arsenic, and lead. In addition to expanding wet coal ash impoundment, LG&E proposes to collect scrubber wash water in an impoundment and then discharge 2.3 million gallons of wastewater from the plant and scrubber wash

water pond everyday directly into the Ohio River.

On December 1, KWA filed a Motion to Intervene with the Kentucky Public Service Commission (PSC) in both the LG&E and Kentucky Utilities rate cases in order for EPA's new coal ash rules to be considered. EPA failed to release the proposed coal ash regulations by the end of December and the PSC denied KWA's motion.

EPA has promised the release of new coal ash regulations soon, but the Obama Administration and the Office of Management and Budget (OMB) have come under fire from industry lobbyists and coal friendly legislators to weaken the coal ash regulations prior to release for public comment. At issue is the classification of coal ash as "Hazardous" waste and the establishment of national disposal standards to protect water supplies and communities from toxic coal ash. Thousands of e-mails and phone calls to the White House, Office of Management and Budget (OMB), the US EPA and Congressional Offices telling them coal ash is hazardous and federal regulations are needed immediately. There is no more time for delay! Please take a few minutes to visit our website and find out how you can take action against coal ash.

MTR the Topic at Nationwide Permit 21 Hearing

Jason Flickner

In October, the Army Corps of Engineers held a series of public hearings on a proposal to prohibit the use of Nationwide Permit 21 (NWP 21) in the Appalachian Region or suspend NWP 21 and provide individual permit

reviews in Appalachia while the permit is modified to prohibit its use. NWP 21 is a general permit that authorizes discharges of dredged or fill material into waters of the United States for surface coal mining activities without

receiving a thorough preliminary review.

The Kentucky hearing, held in Pikeville, was attended by over 4000 people, mainly coal supporters and employees based in from communities

(Continued previous page)

managed by Jennifer. And if you're one of our loyal members, you've certainly heard from our membership assistant, Kelly, who manages our Greensburg office while finishing up her degree this semester at Lindsey Wilson College. We also introduced you to Bob Wilson in our last newsletter, who is graciously volunteering in our office to handle our financial records.

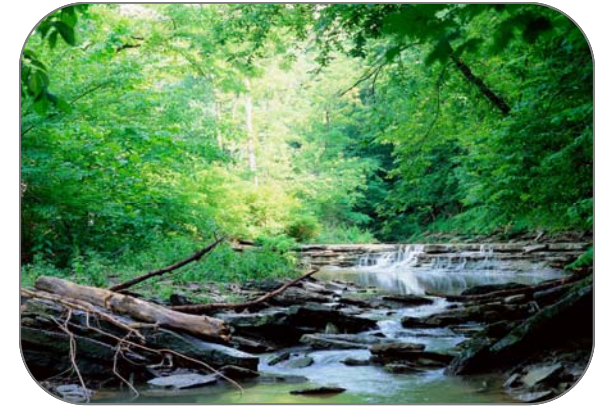
And we're excited about introducing you to Angela Doyle who is coming on board as our new Development Director. (Read more about Angela below.) Angela will be leading our major donor and fundraising efforts in 2010. Working full-time out of our Louisville office, Angela will help us expand our work and programs by developing new funding sources while building and maintaining current ones.

Together, we are a team – and our mission is to protect and restore Kentucky's waterways. Nothing is more important than clean water. In Kentucky we have an abundance of beautiful waterways that are threatened by many who would knowingly or unknowingly pollute it. We will continue to fight those who would pollute our precious water for personal or corporate gain.

We have a lot of work and also much to look forward to in 2010. On February 27, 2010 we will be bringing the Wild and Scenic Environmental Film Festival back to the Clifton Center in Louisville. Those who attended last year had a great time. We are striving to make it even better this year. We're also showing a children's program in the afternoon before our evening event. John Gage of Kentucky Homefront will be our emcee and Dave Shuffett will make another appearance that night to show footage from one of his featured wild rivers. We hope you will come out to join us. To learn more read our article pages 1 & 6.

Welcome Aboard Angela! KWA Hires Development Director

Kentucky Waterways Alliance is happy to announce the addition of a new team member! Starting February 1, Angela Doyle will join us as Development Director. A Louisville native, Angela comes to us from Boys Haven where she has served as Grants Administrator/Development Assistant for 3 years. While there, she worked with the development team to increase the organizational budget from \$5.6 million in 2006 to over \$9 million in 2009. Angela will lead our major donor and fundraising efforts in 2010 working full-time out of our Louisville office. In her spare time, Angela is an active member of the Louisville Sierra Club chapter. She lives in Louisville with her husband, 9-month-old son, and two Siberian Huskies.



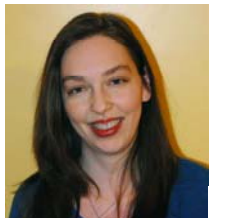
Fowler Creek in the Licking River Basin. Photo submitted by Marc F. Hult for the KWA 2010 Calendar - read more page 5.

2010 will also kick off our new campaign to clean-up Beargrass Creek. We've playfully tagged it the Show Your Love for Beargrass Creek campaign! Beargrass Creek, a beloved but often neglected stream, is the main urban waterway running through Metro Louisville. We're beginning in our own backyard near our Louisville office, and will be enlisting your help to clean up the creek. Read our feature article pages 1 & 9.

Finally, we're very excited about another new project – one that will allow us to engage communities, citizens, and agencies in a renewed effort to protect the Red River Gorge. We're excited – we hope you are too. Read article on page 8.

On behalf of the staff and board at KWA, we wish you a Happy and Healthy New Year.

Judy



KWA Takes Part in Festival of Faiths

The Center for Interfaith Relations in Louisville held a weeklong event for water in November. The theme of the event was "Sacred Water, Sustaining Life." KWA participated with an informational booth, and Jason Flickner, water resources program director, was there to serve on the panel, "How Anyone Can Protect Our Waterways."

"We were so happy to have KWA participate in this year's festival. The Saturday panel was such a wonderful and enriching one!" said Stewart Lussy, Interim Director of Center for Interfaith Relations.

Tessa Edelen, watershed program director, also gave a brief explanation of KWA's work in 2010 for Beargrass Creek during the panel discussion. The event generated some great awareness about our important work.



Jason Flickner, KWA water resources director, served on a panel to discuss how we can all protect our waterways.

KWA Supports Climate Action at 350 Event

On October 24 Kentucky Waterways Alliance joined many other concerned citizens at the worldwide 350 event at the Waterfront Park. "350" is the number that leading scientists say is the safe upper limit for carbon dioxide in our atmosphere. Scientists measure carbon dioxide in "parts per million" (ppm), so 350 ppm is the number humanity needs to get below as soon as possible to avoid runaway climate change. This international event, designed to gain momentum for global climate action, inspired over 5,200 events in 181 countries to unite together on this day for the love of our planet.



Kelly Craig, KWA membership assistant, talks to Trisha Tull of Louisville about how KWA works for clean water in KY on the waterfront at the 350 Climate Action event.

Sarah Lynn Cunningham, director of Louisville Climate Action Network and KWA supporter, was also at the event. (Read her article next page.)

In conversation, she said something that sums up nicely why we all do this important work for our environment - "I believe when you give back to Mother Earth, she will give back to you."

We are with you, Sarah Lynn!

Events

(continued from Page 1)

February 27 - Wild & Scenic Environmental Film Festival kids' program hosted by KWA at the Clifton Center, 2117 Payne Street, Louisville from 3 - 5 pm. Come see great films that will educate the young ones about the importance of caring for our environment with entertainment by John Gage. Free and open to the public.

March 7 - 19 - Alternative Spring Break hosted by Living Lands and Waters in Louisville. This event is a great way for students to give back to the planet by assisting with clean-up efforts along the Ohio River. Scholarships are available. Visit: www.livinglandswaters.org for more information.

March 11 - Salt River Watershed Watch Annual Conference at U of L. Contact: Russ Barnett at r.barnett@louisville.edu. Visit www.kwalliance.org to learn how to register under upcoming events.

March 12 & 13 - Louisville Food Summit hosted by Community Farm Alliance at Meyzeek Middle School, 828 S. Jackson Street, Louisville. More info: www.louisvillefoodsummit.eventbrite.com

March 27 - X-Stream Clean Up for the Ohio hosted by Living Lands & Waters in Louisville. Come out for the largest clean-up effort on the Ohio in the state. Contact: Shanon at (309) 236-5627

Have an event for our newsletter or website, let one of our staff know and we'll be sure to give you a plug!

Beargrass Gallery Fundraiser

(Continued from page 1)

supporter and past board president, won the kayak lessons! Frank was also honored that night with an emeritus board member award. Dr. David Wicks also donated a ride down Beargrass for the event, and Michelle Naiser claimed that prize. Thanks to everyone who supported us by purchasing a raffle ticket.

Like many urban streams, Beargrass Creek has fallen victim to pollution over the years making it unsafe for recreation. Our new campaign for the creek will be built upon the work of those before us, including the Beargrass Creek Watershed Council. It's a big job, and there is room for everyone to be involved.

"Beargrass Creek has long been neglected and abused, and the task to clean it up definitely requires a community effort. We're hopeful that those that live around the creek or grew up playing in the stream will recognize the opportunities and possible benefits to the city are enormous for restoring it to health," said Judy Petersen, KWA executive director.



KWA supporter Michael Hannan mingles with Tom Fitzgerald, Director of Kentucky Resources Council, who volunteered as the Celebrity Bartender at the fundraiser. Not only is Fitz an accomplished environmental attorney, he also serves a mean drink.



Beverley Juett, KWA president, presents Frank Elsen, past KWA president, with a Winston fly fishing rod as a token of our appreciation for his support. He was also bestowed the title of KWA Board Member Emeritus - our first emeritus board member.

Our work to reclaim the creek will begin in our own backyard. If you're a local resident in the Butchertown and Irish Hill neighborhoods, we want your help! We hope to engage local residents and businesses to work toward improving water quality in the creek and making it an accessible part of our city again. Examples of ways we can all work together for better creek water quality include building rain gardens and producing rain barrels, promoting pervious pavement in new development, creek clean-ups, storm drain stenciling, and creek celebration days. The possibilities are endless if we put our minds together to support the creek! Our efforts will bring about change at the local level and will give the creek back to its rightful owners - the community.

You can take the first step toward restoring this historic and beloved creek by joining us at the kickoff meeting on January 26, 2010. (Details below.) Your support is essential as we begin to engage the community to restore Beargrass Creek.

If you're interested in learning more about how to get involved, contact Tessa Edelen at tessa@kwalliance.org or (502) 589-8008.

Save The Date!

Beargrass Creek Workshop

Where: Eyedia at 1631 Mellwood Avenue, Louisville, KY

When: Tuesday, January 26 from 6 to 8 p.m.

You're invited to a brainstorming session to talk about ways we can all work together for the health of Beargrass Creek. To get involved and be a part of the most exciting watershed effort in town, give us a call or e-mail us at Tessa@kwalliance.org or 502 589 8008. Light refreshments will be provided.

KWA to Begin Work in Red River Gorge

Tessa Edelen

KWA is very pleased to be taking part in an upcoming grant that will address water quality throughout the Red River Gorge.

The Red River watershed is a combination of beautiful natural areas, urban development, scenic streams, and impaired waters. The project will develop a watershed based plan for the upper watershed to address stream threats and impairments on both private and National Forest Service lands. Best Management Practices (BMPs) will be implemented to reduce stream sedimentation.

A watershed based plan known as the "Limits of Acceptable Change" has recently been completed for the lower portion of the watershed (USFS, 2008) in the Red River Gorge. The plan showed that due to unregulated recreational use, some parts of the Red River Gorge are being severely degraded. The destruction of habitat and vegetation as well as increases in sediment discharges into various drainages is widespread. The goal of the project is to reduce these negative effects and protect the watershed from further impairment resulting from recreational use. The objectives of this project are to develop a watershed based plan in the upper watershed and implement the "Limits of Acceptable Change" plan in the lower watershed.

This unique and scenic natural area occurs within the boundaries of the Daniel Boone National Forest in eastern Kentucky. The gorge is known for its free-flowing streams, abundant natural stone arches, unusual rock formations, and spectacular sandstone cliffs. State and federal designations within the area include the Red River Gorge Geological Area, National Wild and Scenic River, State Wild River, Outstanding National Resource Water, Clifty Wilderness, National Natural Landmark, National Archaeological District, and a National Scenic Byway. These designations guide the management and protection of watersheds, wildlife, archaeological resources and spectacular geologic features in the gorge. The Red River is also a priority watershed under Kentucky's Watershed Management Framework. The river was given this designation to protect it from several threats.

The Red River Gorge is visited by an estimated half million people per year from around the world. This high level of visitor use is putting a heavy burden on the natural resources. The Forest Service maintains a network of 67 miles of trails but users have created an additional 195



miles of trail. In addition, users have developed 1,400 campsites, 272 vistas, and 775 rock climbing routes. These user developed trails, campsites, and highly impacted areas are not maintained by the Forest Service. Due to over use these are highly impacted and causing erosion and stream sedimentation.

The Red River Gorge is downstream of privately owned land, small towns and farms. Streams in these headwater areas are mostly in good condition but are threatened by illegal dumps, loss of streamside vegetation, runoff from towns, agriculture, and mines. Pathogens in several creeks threaten public health and drain into the Red River Gorge. Swift Camp Creek and one of its unnamed tributaries, upstream of the gorge, are listed as impaired on the Kentucky 2006 303(d) list.

Even though many stream impairments are thought to exist, the exact locations and overall impacts to the stream network are unknown. This is especially true on private land in the headwaters. On National Forest Service lands, many of the recreation impacts causing stream sedimentation have been inventoried and documented in the "Limits of Acceptable Change" process that has occurred over the past three years.

Historically, efforts to improve and protect water quality have been implemented on a piece-meal basis and did not examine watersheds as a whole. This project would develop a watershed based plan that addresses stream threats and impairments on both private and forest service lands. Where work has already been completed in the Red River Gorge related to erosion from recreation, BMPs will be implemented to reduce stream sedimentation.

Climate Change – The Water Connection

Sarah Lynn Cunningham

The recent news about climate change may not explicitly connect to impacts on Kentucky waterways, but the nexus between climate, energy and water deserves our attention.

Coal mines are notoriously destructive to our waterways, especially when using the worst mining techniques, such as mountaintop removal.

Besides climate-warming greenhouse gases, the air pollution emitted by coal-fired power plants are the main source of the mercury that necessitates "fish consumption advisories" for all Kentucky streams and lakes.

Proximity to coalfields isn't the only reason why Kentucky burns more coal than it needs and exports the excess electricity: power plants require huge quantities of cooling water—and only the portion that isn't evaporated is returned to its source river.

Pursuing coal gasification and/or liquefaction technologies would require non-sustainable quantities of water and public subsidies (funds that could be better on demand-side management). It's anyone's guess as to who'd win a battle over water withdrawal rights between coal and farming interests.

The production of many biofuels also consumes enormous quantities of water.

I avoid the term, "global warming," because so many people don't realize that increasing the planet's temperature leads to extremes in all kinds of weather patterns, not just temperature highs.

In Louisville, for example, analysis of 60 years of hourly weather data showed that we're receiving less and less snow. Yet, because total precipitation remained essentially constant, heavier rain storms are more frequent; neither stream banks nor drainage

infrastructure can carry the worst storms.

Flooding poses the greatest natural-disaster risks to Louisvillians. But many Kentuckians are located on waterways burdened by excessive silt—from erosion on farms, construction sites, logging operations or mines—and equally vulnerable.

The good news is that improving energy efficiency and shifting to renewable energy sources will protect water resources, reduce climate change, improve public health, create green jobs and strengthen our economy. To learn more, please visit www.louisvillecan.org.

Sarah Lynn Cunningham is the director of the Louisville Climate Action Network and a district manager for www.theclimateproject.org.



Need a New Year's Resolution?

Make a Commitment to Support Clean Water in Kentucky with a KWA 2010 Calendar!

With generous photos donated from our members and supporters, we've produced a unique calendar that showcases some of the state's most beautiful waterways. And when you make a donation or become a member at the \$50 level, we'll send you one! From Blanton Forest in the east to Cypress Swamps in the west, this calendar is the perfect way to show your support for clean water in Kentucky! They're also printed on FSC certified paper, which guarantees that the wood comes from a certified, well-managed forest. To give, visit our website and make an online donation. Be sure to indicate that you'd like to receive the calendar as a thank you gift. You can also visit our website to view a PDF version of the entire calendar.

The photos on the right are just a few examples of ones that are in the calendar. Special thanks to Dr. Tom Barnes, Rob Miller, and Brandon Jett, and all of you who donated your amazing photos for our calendar!



Wild & Scenic coming back to Louisville on Feb 27

(Continued from page 1)



John Gage is an established, Louisville-based, folk singer/song writer who has made a career of entertaining audiences with his resonant tenor voice and flat-picking guitar.

restoring over 20 miles of habitat, galvanizing the local community, and leading to significant educational innovations.

We'll also bring you *Big River*, a film that casts light on the devastating effect that big agriculture has on the Mississippi River and the Gulf of Mexico. In *Big River*, the filmmakers go to Iowa with a mission: to investigate the environmental impact their acre of corn has had on the people and places downstream. In a journey that extends from the American heartland to the Gulf of Mexico, the guys trade their combine for a canoe and set out to see the big world their little acre of corn has touched.

Living Lightly offers a magical glimpse into a world where one family lives simply and beautifully. Local filmmaker, Robin Burke, uses film to explore a way of relating to and loving the land and the bounty it conveys in return for devotion. In a corner of New Brunswick, Canada, the craft of scything, is meditation in action. The film is a study in how we might heal our relationship with planet Earth.

With generous support from 9th District Councilwoman Tina Ward-Pugh and 8th District Councilman Tom Owen, we're also excited to bring you a special program this year for children. Our children's film program is open to the public before our evening program from 3 - 5. In addition to music and entertainment provided by John Gage, we'll unveil video shorts created by local children during intermission. The shorts will give us answers to the question,



back to show a film segment about Kentucky's Big South Fork Recreational Area—known for its pristine waters and breathtaking views.

Our film lineup includes stories of everyday people who have made a difference for our environment one action at a time. For example, we'll be showing *A Simple Question*, *the Story of S.T.R.A.W.* where hope and inspiration can be found in the Stemple Creek Watershed of Northern California. In 1992, a fourth grade class-project began what is now a remarkable program

"Why Should we ALL love Beargrass Creek?" (Read more about the contest in the article on the next page.)

All the films in the children's program are 15 minutes or less and will last about an hour not including a 30-minute intermission. We'll be showing G-rated, kid friendly films like *Every Day at School*, a film short that lets you follow a class down under as they spend the first five minutes of every day at school taking action to change the world in positive ways. In *The New Species*, an insect must engineer a daring escape for a fellow insect captured by a bug collector in this fun and expertly crafted stop-motion animation. In *Plastic Perils of the Pacific*, a neurotic little crab does his part in cleaning up the ocean. To view the complete film line-up for both events and to watch the film trailers check out our website.

Opening reception begins at 7 with films starting at 8. General admission to the film festival is \$15. Like last year, we're hosting an opening reception with food and drink before the films begin. (Read more about our partnership with River Bend Winery on the next page.) Our members are invited to join us with the purchase of a film festival ticket at \$15. Not a member? Admission to the opening reception is only \$30 and includes a year-long KWA membership along with admittance to the film festival. What a deal! KWA members who bring a friend who purchases a ticket to the opening reception that night will get into the film festival free of charge. Tickets for the film festival and opening reception are now available online on our website.

Details for both events are still unfolding. Check our website often or sign up for our e-mail list to stay informed about how we're planning to make this the best event in Louisville for environmental stewardship!



Guests at last year's Wild & Scenic Environmental Film Festival take the time to fill out their tickets for door prizes. (Councilwoman Tina Ward-Pugh pictured in the middle.)

Photo credit: ANR Photography

Newstreams

Support Clean Water in KY by Sponsoring the Wild & Scenic Environmental Film Festival!

Last year, the film festival was supported by local businesses and organizations in Louisville. The festival is a great way for your business or organization to support local environmental groups, raise awareness for your own green initiatives, and promote green business. It's also a great chance to fellowship and network with good folks.

We're again offering four levels of sponsorship: Title (\$1,000 level), Supporting (\$500 level), Friendship (\$100) and Community (\$50). Check out our website to learn more about sponsorship benefits. Or contact Jennifer at Jennifer@kwalliance.org or (502) 589-8008 to find out how you can partner with us to make this event great.



A special early thanks to a some of our Title sponsors for the event. Kris Rommel of Derby City Film Festival was a huge help last year, providing his projector and technical expertise. This year, he'll be on hand once again as a Title Sponsor. Much thanks also to Ashley Rommel, for graciously donating her photography skills last year. If you want to support indie film in Louisville, check out their film festival Feb 18-21 at the Clifton. Visit them at www.derbycityfilmfest.com.

We welcome two new Title sponsors to our opening reception this year! River Bend Winery is located on 10th street between Main and Market, the winery and restaurant is downtown Louisville's best kept secret. Offering wines made from local grapes, wine tastings and tours, and a full bistro menu, the winery is making waves through Louisville. Try out their fine selection of wines at our opening reception before the fest. You can also purchase bottles of wine that night with part of the proceeds from each sale going to KWA. Visit them at www.riverbendwine.com.



INSPIRED CATERING

keep a restaurant named Wiltshire on Market with an emphasis on fresh, local ingredients. The restaurant is open evenings Thursday - Friday and offers unique accommodations for private events. Visit them online at www.wiltshirepantry.com.

Wiltshire Pantry is sponsoring a delightful selection of appetizers for our opening reception. Located in Louisville, they offer catering services and also

Calling All Budding Directors, Producers, Writers & Actors! KWA Invites You to Show Your Love for Beargrass Creek

Kentucky Waterways Alliance invites you to tell us why you love Beargrass Creek! Using video, tell us why protecting Beargrass Creek is important to you and why protecting our rivers, lakes, and streams like Beargrass should be important to everyone. Be creative! Your video should tell a story. Examples of questions you may consider during your two-and-a-half minute film include:

- * What are things each of us can do to protect the creek?
- * How can we all work together as a community to protect water quality?
- * What is a watershed and why should we care about it?
- * And finally, reasons why you love Beargrass Creek and why everyone should love their waterways!

Entry deadline is February 15, 2010. The top 8 video entries will be shown at the kids' program during KWA's Wild and Scenic Environmental Film Festival from 3 - 5 p.m. on February 27, 2010 at the Clifton Center. A judge's panel will vote on the entries for 1st, 2nd and 3rd place prizes during the event. First (valued at \$300), Sec-

ond (valued at \$200) and Third (valued at \$100) place prizes will be presented during intermission.

The three winning videos will be shown during that night's Second Annual Wild & Scenic Environmental Film Festival and used later in radio and print advertising to promote KWA's new campaign in 2010 to reclaim Beargrass Creek.

You can visit our website to download the application packet and learn more. Entries need to be mailed to our Louisville office at: 120 Webster Street, Ste 217, Louisville, KY 40206

Please contact: Tessa Edelen at tessa@KWalliance.org or (502) 589-8008 for more information.

A special thank you to 9th District Councilwoman Tina Ward-Pugh and 8th District Councilman Tom Owen for providing funds to help with the video contest.

