

Harrods Creek Watershed

Chapter 1: Getting Started

The Harrods Creek Watershed drains over 92 square miles in Henry, Oldham, and Jefferson Counties. The majority of the watershed is located in Oldham County with the headwaters in Henry County and the mouth in Jefferson County (see Figure 1.1). The mainstem is over 33 river miles long, and it has several sizeable tributaries.

Harrods Creek was selected for a watershed planning project because it has relatively good water quality and habitat, many recreational opportunities, increasing pressure from development, and a concerned community of stakeholders. Harrods Creek is also a tributary to the Ohio River, which is a drinking water source as well as a prime recreation spot. Harrods Creek was first listed by the Kentucky Division of Water (KDOW) as impaired for primary contact due to fecal coliform in the *2006 Report to Congress on the Condition of Water Resources in Kentucky*.

Watershed planning is a comprehensive, collaborative way to plan for the protection and improvement of the water quality in a given body of water. It makes sense to look at all the things affecting Harrods Creek, for example, not just the water itself. Watershed planning involves gathering local stakeholders to share their knowledge, concerns, and ideas in developing the plan. It is a great way to take care of streams and outreach to local communities at the same time. The knowledge gathered from stakeholders, water quality sampling data, background research, and proposed best management practices (BMPs) to combat pollution and protect resources all go into the plan. As an impaired stream, and a stream of value to the local communities, Harrods Creek needs a plan to protect and improve water quality and habitat for the future.

The main focus of this watershed plan is on the Headwaters of Harrods Creek and Brush Creek (see Figure 1.2). Due to the large size of the entire area, it is not practical to study the entire Harrods Creek Watershed at once. It is intended that when this initial planning portion is complete, BMPs recommended by this plan will be implemented. Then the watershed planning process can move downstream, planning additional areas and then implementing those plans.

This watershed plan follows the format of the *Watershed Planning Guidebook for Kentucky Communities*, first edition, which can be found online here: <http://kwalliance.org/what-we-do/watershed-planning/watershed-guidebook/>

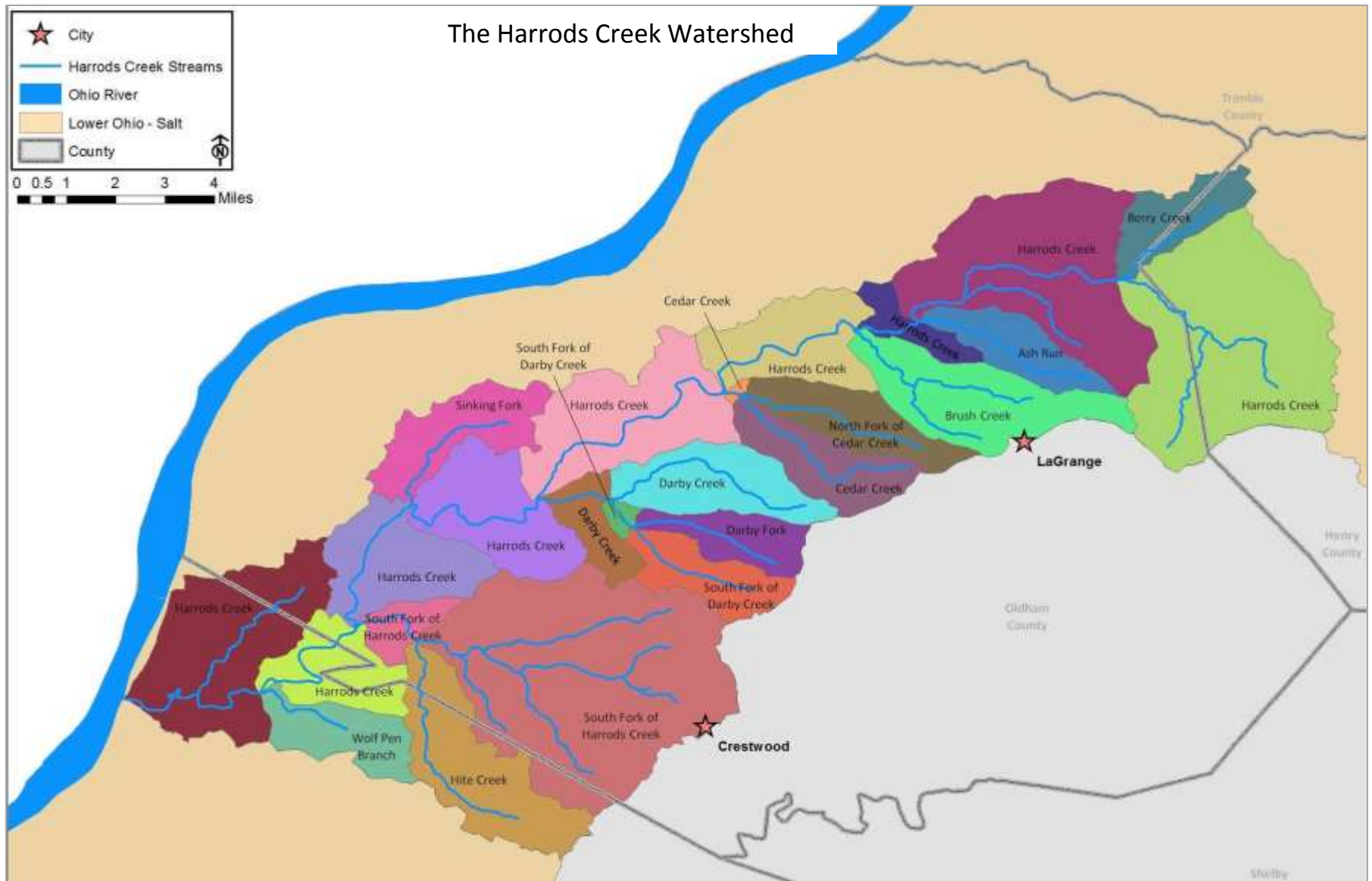


Figure 1.1: The entire Harrods Creek Watershed from headwaters to mouth.

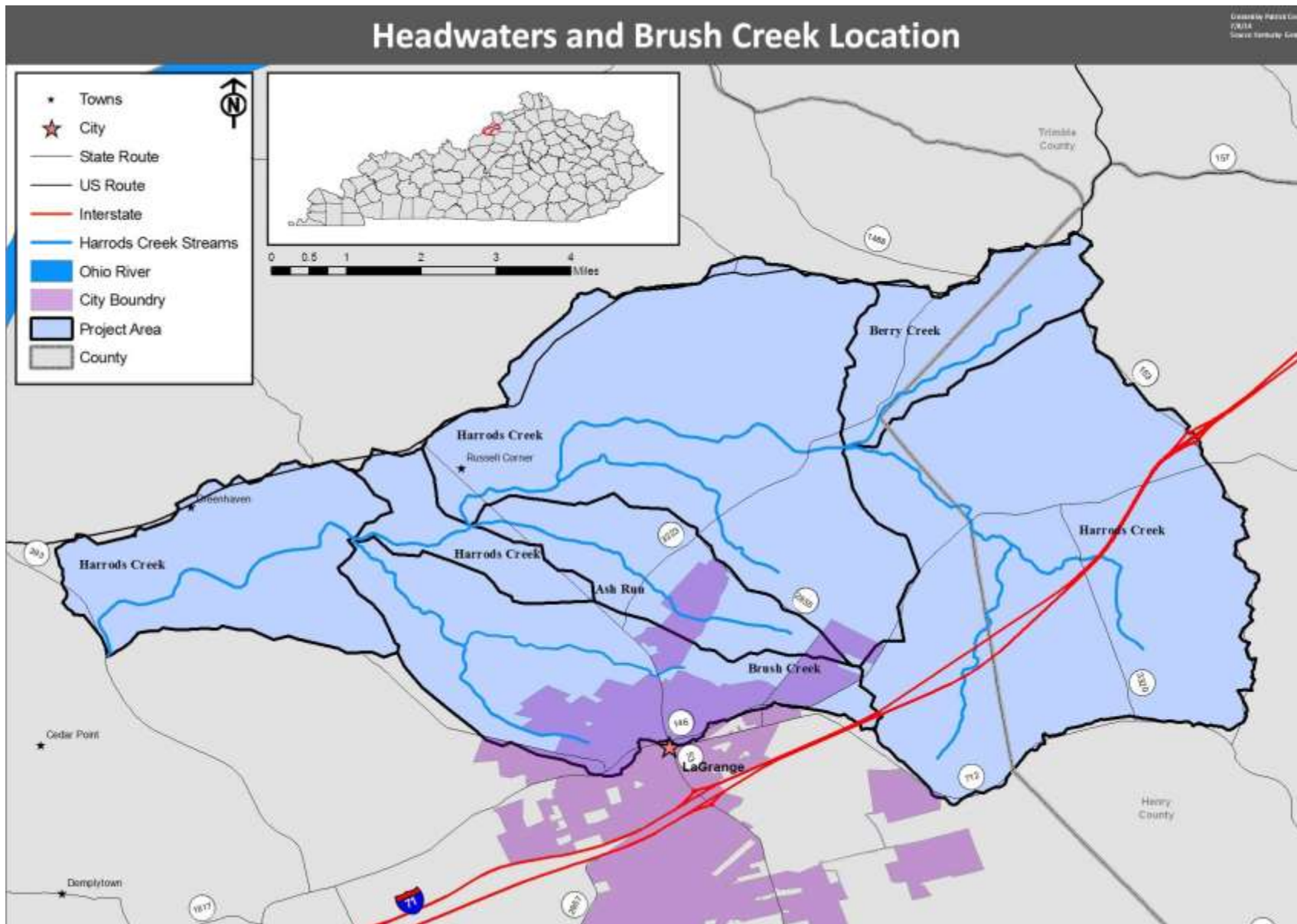


Figure 1.2: The Upper Harrods Creek Watershed, the focus area of this project.

Community Input

Because community involvement and local stakeholders are vital to successful watershed planning, this watershed planning project began with a discussion about community concerns, goals, and other potential stakeholders. The lists below were created by watershed stakeholders in attendance at the Harrods Creek Kickoff Meeting (February 2014). As the project progresses and new members get involved and new concerns come to light, these lists can be adapted. Watershed planning is an iterative process.

Concerns

Run-off	Metropolitan Sewer District
Access	Awareness and Education
Pollution	Community Involvement
Wildlife sustainability	Dream and Vision
Removal of buffer	Public Access to the Creek
Protect existing high quality area	Identify Issues and Areas for Improvement
Info on all Related Resources (not just water quality issues)	List of Agencies and pertinent entities

In what ways do you use Harrods Creek?

Fishing
Hiking
Wildlife
Kids playing
Wildlife viewing
Fishing/kayaking
Photography
Take cattle across w/shallow stream crossing
Botonizing

What are the special places of Harrods Creek?

The rookery

Sleepy Hollow Lake

My backyard

Wildlife

Waterfalls

What do you value about Harrods Creek?

Scenic

Wildlife ecosystem

Kayaking

Scenery

Wildlife

Freshness

Water for horses on ride

Hiking everything

In what ways do you hope Harrods will be different in the future?

Cleaner

Improved access

Get rid of deadfall

Wildlife habitats

Eliminate duck weed

Big fish

Eliminate nettles

Protected water/visual shed

Water quality improved

List of Goals and Potential Stakeholders and Partners

The following is a list of goals and a list of potential stakeholders and partners for the Harrods Creek Watershed planning project. These lists were created by attendees of a watershed planning meeting. They can be added to as the watershed planning process progresses.

Watershed Team Goals

Awareness and Education

Community Involvement

Dream and Vision

Info on all Related Resources (not just water quality issues)

Public Access to the creek

Identify Issues and Areas for Improvement

List of Agencies and pertinent entities

Stakeholders and Partners

Salt River Watershed Watch

Fox Hollow Farm

Kentucky Division of Water

Local Governments (all levels)

Harrods Creek Boat Owners Association

Metropolitan Sewer District

Homebuilders and Developers

Oldham County Environmental Authority

Louisville Area Canoe and Kayak (LACK)

Golf Courses

Kentuckiana Paddlers Association (KPA)

KY State Reformatory

Viking Canoe Club

Farm Bureau

Sisterhood Paddlers

Oldham Ahead

Retailers and Liveries

Kentucky Waterways Alliance

Home Owners Associations

Brownsboro Alliance

River Fields	KY Thoroughbred Breeders
Cooperative Extension	Oldham County Board of Education
Gardening Groups	KY Transportation Cabinet
Naturalists	Local businesses
Birders	Other non-profit organizations
Yell Dell Gardens	4-H
Boone Gardner	FFA
Oldham County Cattleman's Association	Schools
Oldham County Horse Council	

This list does not represent a commitment from these groups or entities, although some of the entities have agreed to be involved. The watershed team will contact them to provide information about the project and ways that they might get involved.

Watershed Team: what else should we add to Chapter 1?

Page left intentionally blank.

DRAFT